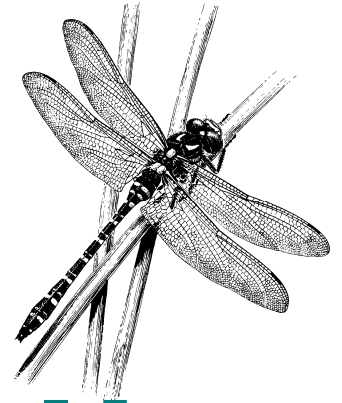


Spring River Walk



Sunday 10 May 2009

2 pm onwards

Manor Farm, West Overton

From West Overton to Lockeridge, the walk follows private land and public footpaths along the upper Kennet. Parking and refreshments available at Manor Farm. The Ramsbury Flyer mini-bus is available for one-way walkers. Sorry, no dogs.

The walk is not suitable for pushchairs or wheelchairs, some terrain is rough and stout footwear is strongly recommended. There are several stiles to climb. The route is approximately 2 miles each way.



www.riverkennet.org